

LEAP PSTART HANDY PIC WRITER

LEAP PSTART makes designing with Microchip MCUs simple and affordable.

The LEAP PSTART development system from Microchip technology provides the product development engineer with a highly-flexible, low-cost microcontroller design tool set for all PIC14000, PIC16C5X, PIC16CXX and PIC17CXX 8-bit one-time-programmable(OTP), DIP packages up to 40-pin devices.

The LEAP PSTART development system operates on any PC-compatible machine running under the Windows 9x/ME/NT/2000 operating system.

LEAP PSTART is easy-to-use and features Microchip's highly acclaimed MPLAB Integrated Development Environment with its built-in editor, assembler and Windows-based MPLAB-SIM simulator.

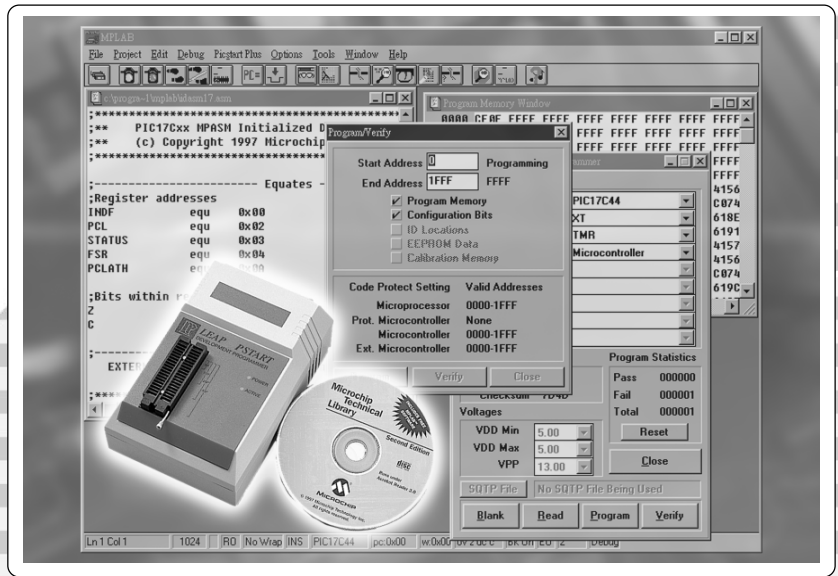
Sample software programs are provided to help the developer quickly become familiar with the LEAP PSTART development system and with Microchip microcontroller families.

Features

- Low-cost Development Kit Supports PIC 14000, PIC 16/17 MCUs
- Operates with PC-compatible host system running Windows under MPLAB environment
- Able to upgrade software from Leap or Microchip internet server
- Reads, programs, verifies EPROM and EEPROM program and data memory
- Reads, programs, verifies all configuration bits
- Programs, verifies and address range
- Displays, edits, and transfers device contents to and from programmer unit
- MPLAB Project support to automatically download object file to PSTART Plus
- MPASM Assembler translates assembler source code to object code for all PIC16/17 devices
- MPLAB-SIM Windows-based simulator designed to model operation of all PIC16/17 microcontrollers
- Complete with RS-232 cable, 9 volt universal IEC power supply and power cable and the MPLAB Integrated

Standard Accessories

- Main unit
- RS-232 cable
- DC power adaptor
- CD-ROM



Physical & Environmental Specifications

- Dimension : 16cm × 11cm × 4.5cm
- Weight : 0.5 kgs
- Temperature : +5°C to +45°C
- Humidity : up to 90% non-condensing
- Altitude : up to 5000m

Optional Accessories

Full range adaptors

Electronical Requirements

- Operation Voltage : 100VAC to 240VAC
- Frequency Range : 47 to 63 Hz
- Power Consumption : 10W maximum

Information subject to change. All right reserved. LEAP PSTART is manufactured under licensed from Microchip. All trademarks mentioned herein are the property of their respective companies. Reprinted with permission of the copyright owner, Microchip Technology Incorporated 1998. All right reserved. No further reprints or reproductions may be made without Microchip Technology Incorporated's prior written consent. Information contained in this publication regarding device applications and the like is intended for suggestion only and may be superseded by updates. No representation for warranty is given, and no liability is assumed by Microchip Technology Incorporated with respect to the accuracy or use of such information, or infringement of patents arising from such use or otherwise. Use of Microchip Technology Incorporated products as critical components in like support systems is not authorized except with express written approval by Microchip Technology Incorporated. No licenses are conveyed implicitly or otherwise under any intellectual property rights.

Supported Devices

PIC12C508	PIC12C508A	PIC12C509
PIC12C509A	PIC12CE518	PIC12CE519
PIC12C671	PIC12C672	PIC12CE673
PIC12CE674	PIC14000	PIC16C505
PIC16C52	PIC16C54	PIC16C54A
PIC16C54B	PIC16C54C	PIC16HV540
PIC16C55	PIC16C55A	PIC16C554
PIC16C558	PIC16C56	PIC16C56A
PIC16C57	PIC16C57C	PIC16C58A
PIC16C58B	PIC16C61	PIC16C62
PIC16C62A	PIC16C62B	PIC16C620
PIC16C620A	PIC16C621	PIC16C621A
PIC16C622	PIC16C622A	PIC16CE623
PIC16CE624	PIC16CE625	PIC16F627
PIC16F628	PIC16C63	PIC16C63A
PIC16C64	PIC16C64A	PIC16C642
PIC16C65	PIC16C65A	PIC16C65B
PIC16C66	PIC16C662	PIC16C67
PIC16C71	PIC16C710	PIC16C711
PIC16C712	PIC16C715	PIC16C716
PIC16C717	PIC16C72	PIC16F72
PIC16C72A	PIC16C73	PIC16F73
PIC16C73A	PIC16C73	PIC16C74
PIC16F74	PIC16C74A	PIC16C74B
PIC16C745	PIC16C76	PIC16F76
PIC16C765	PIC16C77	PIC16F77
PIC16C770	PIC16C771	PIC16C773
PIC16C774	PIC16C781	PIC16C782
PIC16F83	PIC16C84	PIC16F84
PIC16F84A	PIC16F870	PIC16F871
PIC16F872	PIC16F873	PIC16F874
PIC16F876	PIC16F877	PIC16C923
PIC16C924	PIC16C925	PIC16C926
PIC17C42	PIC17C49A	PIC17C43
PIC17C44	PIC17C752	PIC17C756
PIC17C756A	PIC17C762	PIC17C766
PIC18C242	PIC18F242	PIC18F248
PIC18C252	PIC18F252	PIC18F258
PIC18C442	PIC18F442	PIC18F448
PIC18C452	PIC18F452	PIC18F458
PIC18C658	PIC18C858	